

# Wellmark Series 7400

## Snaptrol Pneumatic & Electrical Liquid Control, Low Pressure No-Bleed

### Application

For use in low-pressure vessels or tanks, this versatile and multioptional device can be used as a level control or as a component of Hi-Lo level alarm systems. The 1" MNPT unit may be mounted into a 1" coupling when the float is accessible from inside the vessel. If float is not accessible, a 2" or larger connection must be provided to allow passage of the float through the connection. The pneumatic 3-way 2-port no-bleed pilot valve makes this unit an excellent choice for the control of liquid level in oil and gas production equipment such as separators, dehydrators, treaters, as well as in manufacturing plants, hazardous waste disposal, food processing, petro chemical facilities, or wherever fluid levels need to be monitored or controlled.

### Features

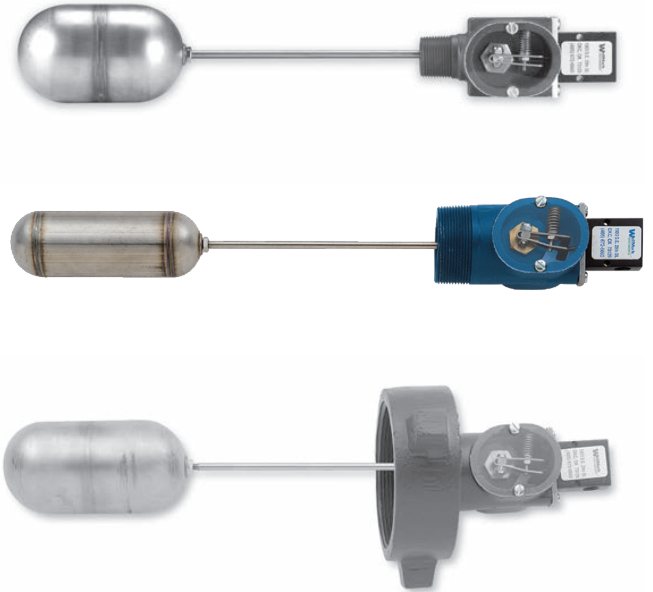
- No-bleed
- Cost effective
- Pneumatic or electric
- 1" and 2" threaded or 4" union
- Other connections available on request
- Choices of float size and float arm extension length
- Float arm extensions limited to: 4", 6", 8", 10" (STD), 12", 14", 16", 18"

### Specifications

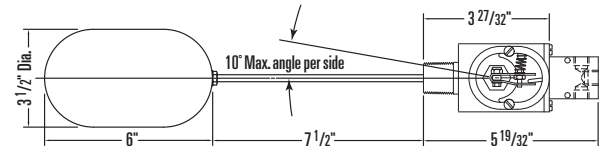
Size	1" Threaded	2" Threaded	4" Union
Body Working Pressure		500 psi	
Float			
Size	*2" x 6"	3" x 6"	**3 1/2" x 6"
Working Pressure	500 psi	500 psi	500 psi
Collapse Pressure	720 psi	850 psi	800 psi
Operating Temperature .....	-20°F to +212°F (available to 400°F)		
Supply Pressure .....	75 psi (250 psi available)		
3-Way Pilot Connections .....	1/4" FNPT		
Material	1" Threaded	2" Threaded	4" Union
Body	A216 WCB	A216 WCB	A216 WCB
			Float Stainless Steel
			Float Arm Stainless Steel
Seals		Buna-N Standard (others available)	
Bushing (Retainer)		360 Brass (S.S. available)	
Electric Switch .....	Explosion Proof		
Electric Switch, Single Pole / Double Throw, UL and CSA listed:	"L96" 15 amps, 125, 250, or 480 VAC; 1/8 HP-125 VAC, 1/4 HP-250 VAC, 1/2 amp-125 VDC, 1/4 amp-250 VDC		

\*Standard on 2"

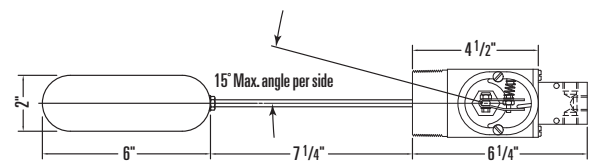
\*\*Standard on 1" Threaded & 4" Union



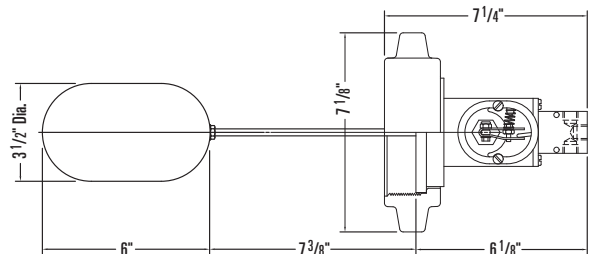
### Dimensional data



**1" NPT THREAD WITH STD. FLOAT AND ARM**



**2" NPT THREAD WITH STD. FLOAT AND ARM**

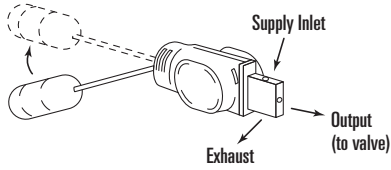


**4" UNION WITH STD. FLOAT AND ARM**

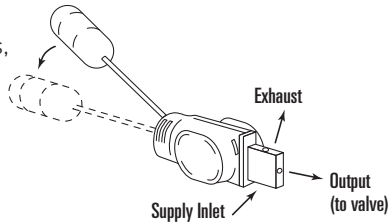
# Model code

## Plumbing schematic

Direct Acting  
When float rises,  
supply opens  
to output.



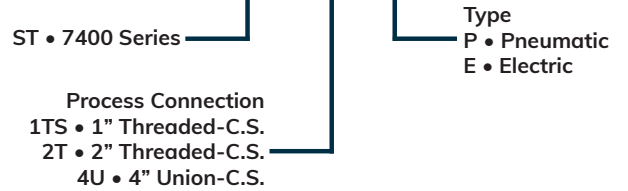
Indirect Acting  
When float falls,  
supply opens  
to output.



## Determining the model number

Example given: Standard model ST2TP - Series 7400, 2" Threaded Process Connection, Pneumatic Type Control

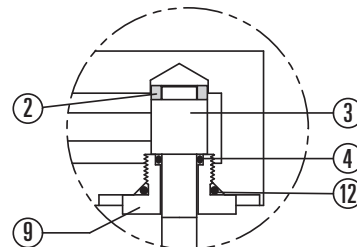
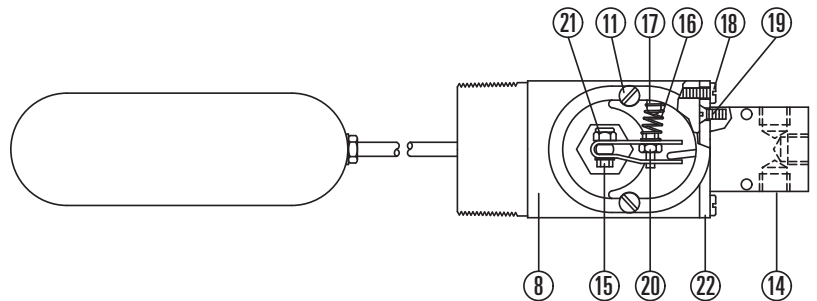
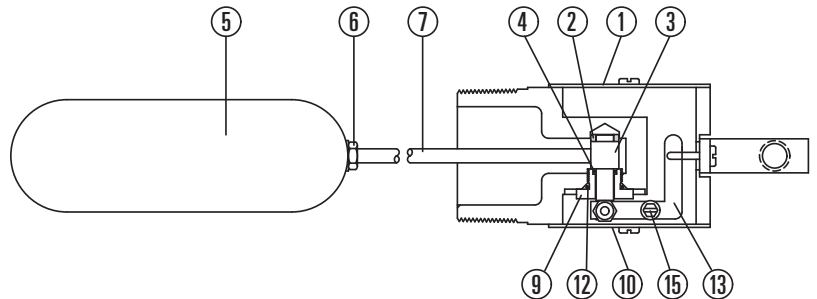
# MODEL 7400 ST 2 T P \*



\* Specify arm length and float size (options are listed on the previous page).

ITEM	DESCRIPTION	QTY.	Part No.
1	NAME PLATE, ALUMINUM	1	1124642
2	BEARING SLEEVE, DELRIN®	1	1123700
3	TRUNNION, STAINLESS STEEL	1	1122743
4*	O-RING, BUNA-N	1	1001548
5	FLOAT 2" x 6", STAINLESS STEEL	1	1122101
	FLOAT 3" x 6", STAINLESS STEEL	1	1120556
	FLOAT 3 1/2" x 6", STAINLESS STEEL	1	1121215
6	JAM NUT, STAINLESS STEEL	1	1120092
7	FLOAT ARM, STAINLESS STEEL, 10" STD.	1	1124652
8	BODY, 1" NPT PNEUMATIC, STEEL WCB	1	1125204
	BODY, 2" NPT PNEUMATIC, STEEL WCB	1	1120724
	BODY, 2" NPT ELECTRIC, STEEL WCB	1	1118920
	BODY, 4" UNION, PNEUMATIC, STEEL WCB	1	1145772
	BODY, 4" UNION, ELECTRIC, STEEL WCB	1	1123339
9	BUSHING, 360 BRASS	1	1122742
10	COVER PLATE, LEXAN	1	1119066
11	COVER SCREW, STL. PLATED	4	1125705
12*	O-RING, BUNA-N	1	1122901
13*	ACTUATOR, STAINLESS STEEL	1	1125920
	3-WAY VALVE, PNEUMATIC ONLY	1	1122627
14*	ELECTRIC SWITCH, ELECTRIC ONLY	1	1160305
15	SCREW, STEEL PLATED	2	1125668
16	SPRING, STAINLESS STEEL	1	1123660
17	SPRING KEEPER, BRASS	1	1125754
18	SCREW, STEEL PLATED	2	1124662
19	SCREW, STEEL PLATED	2	1119356
20	JAM NUT, STAINLESS STEEL	1	1125079
21	LOCK NUT, STL. PLATED	1	1124663
22	MOUNTING PLATE, ALUM. PNEUMATIC	1	1120130
	MOUNTING PLATE 1, ELECTRIC	1	1122832
	MOUNTING PLATE 2, ELECTRIC	1	1125709
24*	HAMMER UNION, STD. V THREAD, WCB	1	1124917
	HAMMER UNION, ACME THREAD, WCB	1	1120530
25*	O-RING, BUNA-N, SCH.80WN (4" UNION ONLY)	1	1120141
	O-RING, BUNA-N, SCH.160WN (4" UNION ONLY)	1	1124270

\*Recommended spare part



TRUNNION DETAIL

---

## Why you can depend on genuine Norriseal-Wellmark products

- In-house engineering and technical support
- In-depth applications experience
- Award-winning innovation and ongoing product development
- ISO 9001 certified manufacturing
- Over five decades of industry service
- Compliance with all industry standards and specifications
- Responsive service and prompt delivery
- Field support available worldwide

Contact Norriseal-Wellmark for more information about our products and services.

### Texas

Houston . . . . . 713-466-3552

### Oklahoma

Oklahoma City . . . . . 405-672-6660

### Louisiana

Broussard . . . . . 337-837-3223



Follow us on LinkedIn.

### Request for Quote

NRS\_RFQ@championx.com



[NorrisealWellmark.com](https://NorrisealWellmark.com)

---

**Norriseal-Wellmark** | 11122 W Little York Rd | Houston, TX 77041

This document is provided on an "as is" basis without warranties of any kind. Norriseal-Wellmark DISCLAIMS ALL WARRANTIES, EXPRESS OR IMPLIED, INCLUDING, BUT NOT LIMITED TO, IMPLIED WARRANTIES OF MERCHANTABILITY, FITNESS FOR A PARTICULAR PURPOSE OR SUITABILITY FOR ANY PURPOSE, TITLE, AND NON-INFRINGEMENT. While reasonable care has been taken in the preparation of this document, Norriseal-Wellmark does not represent or warrant that the contents of this document are accurate, complete, reliable, current or error-free.